



# GAT MONTHLY MEMBERSHIP PROGRESS REPORT

Results as of: 10/31/2021

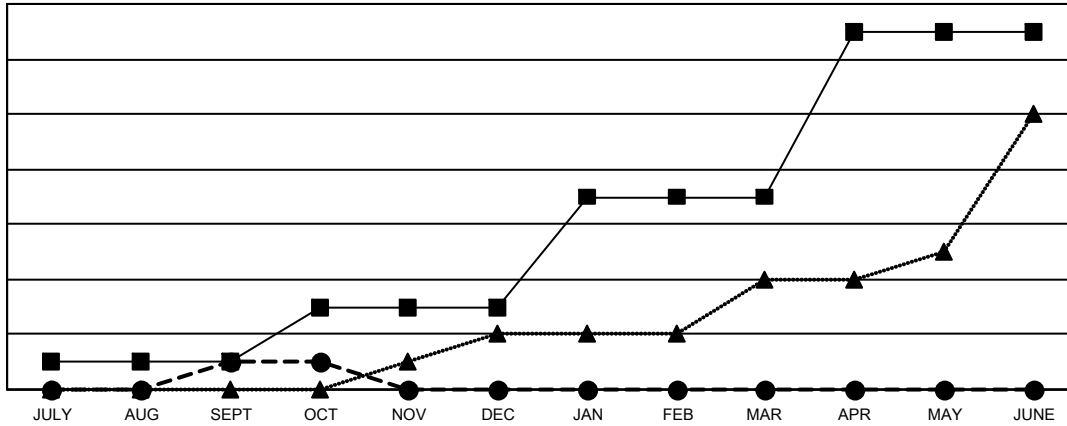
Multiple District 27

LOCATION: WISCONSIN

Clubs			
RESULTS FOR 2021-2022			
QUARTER	NEW CLUB GOAL	NEW CLUBS	DROPPED CLUBS
JULY/AUG/SEPT	1	1	0
OCT/NOV/DEC	2	0	2
JAN/FEB/MAR	4	0	0
APR/MAY/JUNE	6	0	0

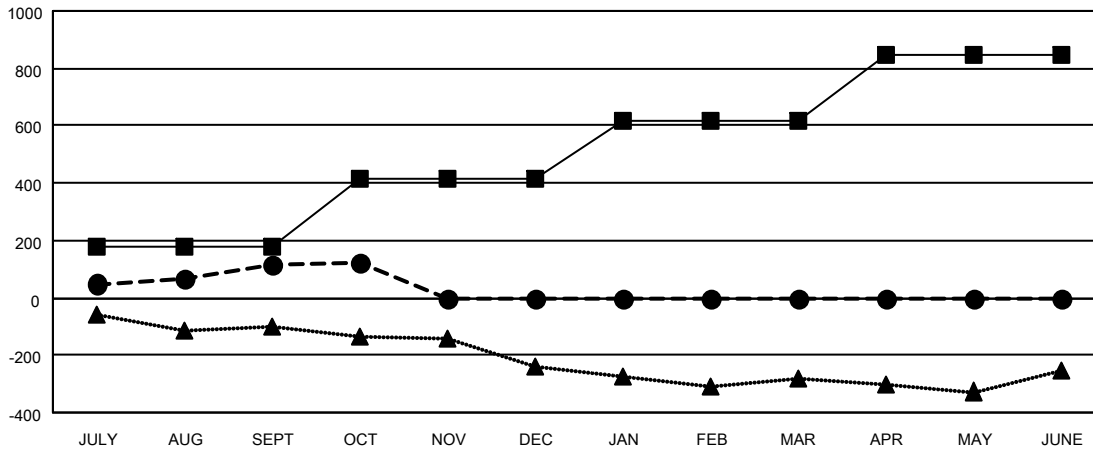
Members			
RESULTS FOR 2021-2022			
QUARTER	MEMBER GROWTH NET GOAL	MEMBER GROWTH ACTUAL	DROPPED MEMBERS ACTUAL (including transfers)
JULY/AUG/SEPT	178	461	312
OCT/NOV/DEC	234	115	99
JAN/FEB/MAR	206	0	0
APR/MAY/JUNE	229	0	0

GOALS AND ACTUAL NEW CLUBS CUMULATIVE



- CURRENT YEAR GOALS FOR NEW CLUBS
- CURRENT YEAR ACTUAL NEW CLUBS
- ▲- LAST YEAR ACTUAL NEW CLUBS

GOALS AND ACTUAL MEMBERS CUMULATIVE



- MEMBER GROWTH NET GOAL
- MEMBER GROWTH ACTUAL
- ▲- LAST YEAR MEMBERSHIP ACTUAL

DROPPED CLUBS: 2	
DROPPED MEMBERS	
DECEASED	57
CLUB CANCELLED	0
OTHER	354
<b>TOTAL</b>	<b>411</b>

200 CLUBS OF 515 ADDED 1 OR MORE NEW MEMBERS

[CLICK HERE FOR CUMULATIVE MEMBERSHIP DATA](#)

GENDER DISTRIBUTION	
MALE	12,195 (72.36%)
FEMALE	4,659 (27.64%)
NON BINARY	0 (0.00%)
PREFER NOT TO ANSWER	0 (0.00%)
<b>TOTAL FAMILY UNIT MEMBERS</b>	<b>3,453</b>
<b>FAMILY MEMBERS PAYING HALF DUES</b>	<b>1,758</b>